

# Report Exec Direct System Specifications

---

## Contents

Overview .....	2
Technical Support .....	2
At a Glance.....	2
Architecture .....	2
Report Exec Systems Diagram .....	3
Report Exec Backup Procedures .....	4
Data Security.....	4
Client Hardware/Software Specifications .....	4
Client Computer Resources .....	4
Client Operating Systems.....	4
Windows .....	4
Mac OSX.....	5
Client Web Browsers.....	5
Windows .....	5
Mac OSX.....	5
Report Exec Dispatch Workstations ONLY .....	5
Report Exec Mobile Devices.....	5
User Firewall Requirements.....	5
Report Exec Enterprise.....	5
Report Exec Dispatch .....	6

## Overview

This document is intended to briefly outline how the Report Exec Enterprise application is deployed for customers that choose the Report Exec Direct web hosting solution. For any technical questions that go beyond the scope of this document, contact [Technical Support](#).

## Technical Support

Email [support@reportexec.com](mailto:support@reportexec.com) or call (414) 304-8500 option 2 with questions. The Technical Support Team is in the office 8am – 4pm Central Time.

## At a Glance...

CLIENT HARDWARE/SOFTWARE SPECIFICATIONS	
Minimum Supported Requirements	Recommended Specifications
1 GB of available RAM or <u>more</u>	2 GB of RAM or <u>more</u>
1 GHz or faster 32-bit or 64-bit processor	Multi-core processor or better
1024 x 768 display resolution	Modern wide-screen resolutions
PDF Reader	Adobe Reader
- <b>One of the following Operating Systems</b>	- <b>One of the following Operating Systems</b>
Windows 7 or higher	Windows 7 or higher
Mac OSX 10.6 (Snow Leopard) or higher	Mac OSX 10.8 (Mountain Lion) or higher
- <b>One of the following web browsers:</b>	- <b>One of the following web browsers:</b>
Internet Explorer 11.0 (Windows Only)	Internet Explorer 11.0 (Windows only)
Google Chrome 17.0 or higher	Google Chrome with the latest updates
Mozilla Firefox 5.0 or higher	Mozilla Firefox with the latest updates
Safari 5.0 or higher	Safari with the latest updates
Microsoft Edge (Windows 10)	Microsoft Edge (Windows 10)
✓ <b>Dispatch Clients ONLY</b>	✓ <b>Dispatch Clients ONLY</b>
<i>Windows Operating System Only</i>	<i>Windows Operating System Only</i>
Microsoft Report Viewer 2010	Microsoft Report Viewer 2010
Microsoft .NET Framework 4.5	Microsoft .NET Framework 4.5

## Architecture

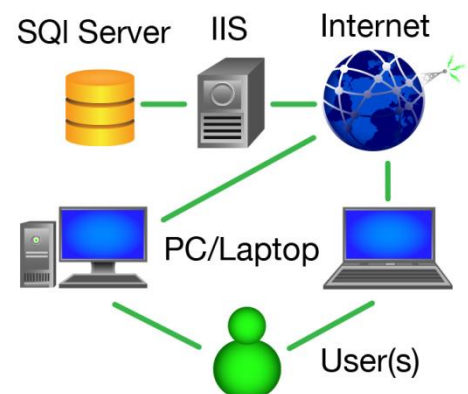
Report Exec Direct is built on a multi-tier model providing flexibility, scalability, and deploy-ability. The pillars of the Report Exec Direct architecture use Microsoft SQL Server for data storage and tracking, and Microsoft Internet Information Services (IIS) for serving web-pages to end-users who are accessing the application through a web-browser.

Benefits of a hosted data solution include, but are not limited to:

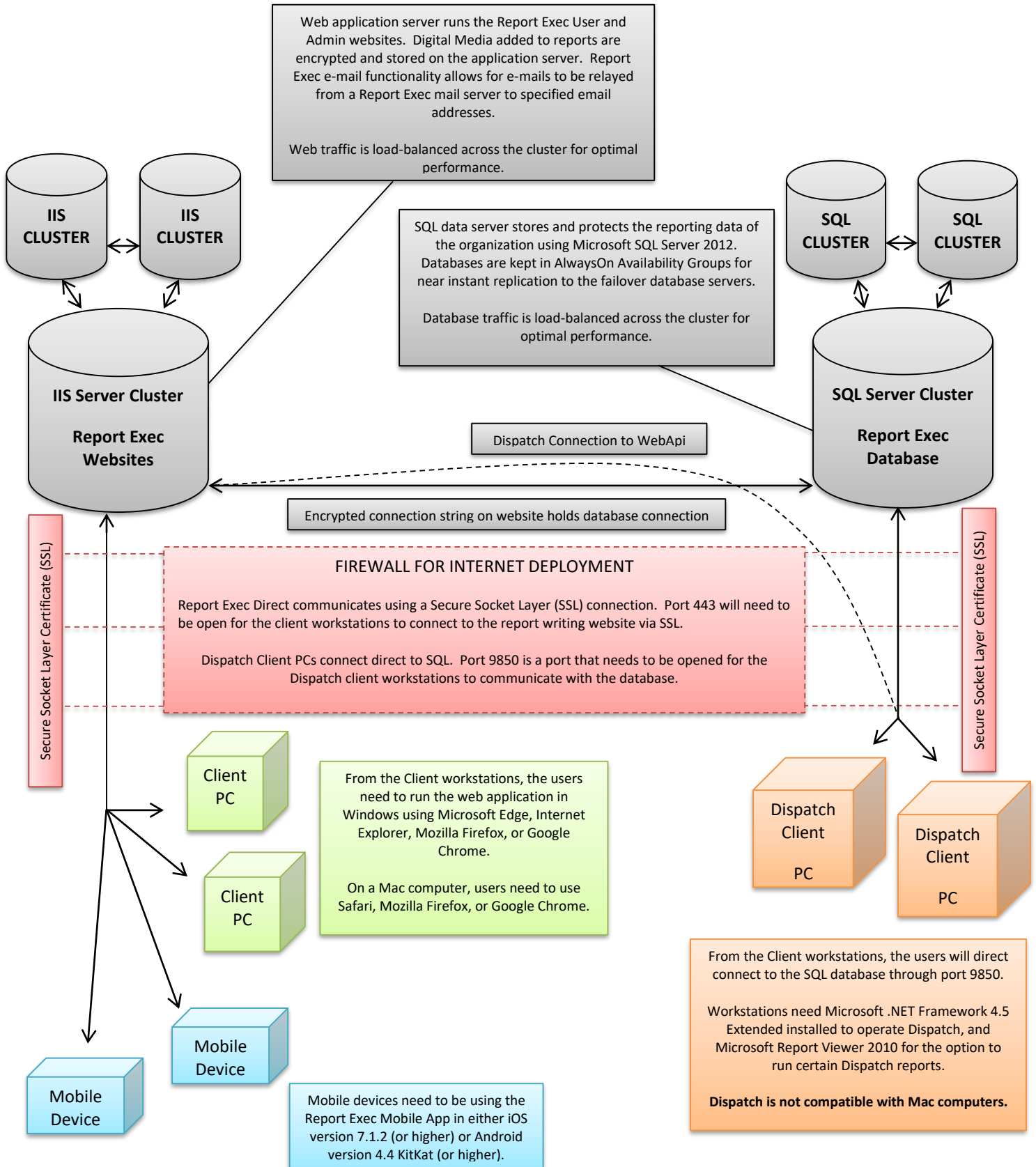
- Report Exec Direct leverages data stored on a Microsoft SQL Server.
- Microsoft SQL Server offers enhanced scalability, reliability, and Enterprise level database features.
- Microsoft SQL Server is arguably the most secure database platform on the market.
- Report Exec Direct servers include firewall protection to keep the servers secured from outside intrusion.

Report Exec Direct servers use RAID configurations and redundant power supplies to assure that any system down time that may occur, due to circumstances beyond human control, is minimized.

## Internet Deployment



Report Exec Systems Diagram



## Report Exec Backup Procedures

Report Exec's top priority is the security and integrity of its customers' Report Exec Direct data. To accomplish this task, all hosted data is routinely backed up on a strict schedule that includes the following:

- ✓ Microsoft SQL Server 2012 AlwaysOn Availability Groups replicate data across the database cluster in real-time for near-instant failover procedures.
- ✓ Full data backups of customer databases executed every day at Report Exec's datacenter.
- ✓ Daily backups are maintained off-site for a period of 30 days.
- ✓ Authorized access only to Report Exec Technical Support representatives.



## Data Security

- ➔ **Database Security** – Securing the data of its customers is Report Exec's number one priority that is taken into consideration during the software development process. Report Exec offers protection from external hackers and internal users within the organization that do not have the proper permissions to access the data. Report Exec's use of stored procedures minimizes the exposure to ad-hoc querying by internal or external users.
- ➔ **User Level Security** – The security model in Report Exec Direct follows group based architecture. Groups are given permission to access specific modules and users can be added to the groups with specified access in the program. 128-bit SSL encryptions, and other security measures, are taken to ensure secure data integrity.
- ➔ **Data Encryption** – All digital media stored on the web server is fully encrypted. This measure ensures that nobody, accidentally or intentionally, can directly view or alter sensitive images or documents. The image below is an example of the encryption seen if someone attempts to edit an encrypted file.

## Client Hardware/Software Specifications

### Client Computer Resources

Client computers that use Report Exec Enterprise should meet today's industry standards for normal PC or workstation computers. Computers using at least Windows 7 are required but Windows 8, 8.1, or 10 can be used without worry.

There needs to be enough available resources on the computer to properly use a complex web application that is delivered to the end-user through a web-browser. Network/Internet bandwidth will also determine how well the Report Exec Application behaves.

### Client Operating Systems

#### Windows

The following versions of Windows are supported:

- ✓ Windows 7
- ✓ Windows 8
- ✓ Windows 8.1
- ✓ Windows 10

### Mac OSX

The following versions of Max OSX are supported:

- ✓ OSX v10.6 (Snow Leopard)
- ✓ OSX v10.7 (Lion)
- ✓ OSX v10.8 (Mountain Lion)
- ✓ OSX v10.9 (Mavericks)
- ✓ OSX v10.10 (Yosemite)

**Note:** Report Exec Dispatch does not function on Mac computers at this time.

### ***Client Web Browsers***

#### Windows

The following web browsers can be used in Windows:

- ✓ Microsoft Internet Explorer 11
- ✓ Google Chrome
- ✓ Mozilla Firefox
- ✓ Microsoft Edge (Windows 10)

#### Mac OSX

The following web browsers can be used on a Mac computer:

- ✓ Safari
- ✓ Google Chrome
- ✓ Mozilla Firefox

### ***Report Exec Dispatch Workstations ONLY***

Report Exec Dispatch currently only works on a Windows OS. In order for the Report Exec Dispatch client to properly communicate with the SQL database on the server firewall port 9850 may need to be manually opened by the organization's I.T. Department.

Additionally, the following two Microsoft files are needed in order for Report Exec Dispatch to fully function:

- ➔ **Microsoft .NET Framework 4.5**
- ➔ **Microsoft Report Viewer 2010**

### ***Report Exec Mobile Devices***

See document: [Report Exec Mobile Specifications](#)

## **User Firewall Requirements**

### ***Report Exec Enterprise***

The Report Exec Direct servers use port 443 for https connections.

Required port:

- Port 443 (https)

### *Report Exec Dispatch*

The Report Exec Dispatch clients connect directly to Report Exec's SQL server. The port required for Dispatch clients to connect will be provided with the initial connection instructions.

Required port:

- Current Report Exec Direct customers should contact Report Exec [Technical Support](#) if this information has been lost.